

bin collection



JULY 2024

M	T	W	T	F	S	S
1	2	3	4	5	6	7
8	9	10	11	12	13	14
15	16	17	18	19	20	21
22	23	24	25	26	27	28
29	30	31				

AUGUST 2024

M	T	W	T	F	S	S
			1	2	3	4
5	6	7	8	9	10	11
12	13	14	15	16	17	18
19	20	21	22	23	24	25
26	27	28	29	30	31	

SEPTEMBER 2024

M	T	W	T	F	S	S
						1
2	3	4	5	6	7	8
9	10	11	12	13	14	15
16	17	18	19	20	21	22
23	24	25	26	27	28	29
30						

OCTOBER 2024

M	T	W	T	F	S	S
	1	2	3	4	5	6
7	8	9	10	11	12	13
14	15	16	17	18	19	20
21	22	23	24	25	26	27
28	29	30	31			

NOVEMBER 2024

M	T	W	T	F	S	S
				1	2	3
4	5	6	7	8	9	10
11	12	13	14	15	16	17
18	19	20	21	22	23	24
25	26	27	28	29	30	

DECEMBER 2024

M	T	W	T	F	S	S
						1
2	3	4	5	6	7	8
9	10	11	12	13	14	15
16	17	18	19	20	21	22
23	24	25	26	27	28	29
30	31					

JANUARY 2025

M	T	W	T	F	S	S
			1	2	3	4
5	6	7	8	9	10	11
12	13	14	15	16	17	18
19	20	21	22	23	24	25
26	27	28	29	30	31	

FEBRUARY 2025

M	T	W	T	F	S	S
					1	2
3	4	5	6	7	8	9
10	11	12	13	14	15	16
17	18	19	20	21	22	23
24	25	26	27	28		

MARCH 2025

M	T	W	T	F	S	S
						1
			2	3	4	5
6	7	8	9	10	11	12
13	14	15	16	17	18	19
20	21	22	23	24	25	26
27	28	29	30	31		

APRIL 2025

M	T	W	T	F	S	S
			1	2	3	4
5	6	7	8	9	10	11
12	13	14	15	16	17	18
19	20	21	22	23	24	25
26	27	28	29	30		

MAY 2025

M	T	W	T	F	S	S
					1	2
3	4	5	6	7	8	9
10	11	12	13	14	15	16
17	18	19	20	21	22	23
24	25	26	27	28	29	30

JUNE 2025

M	T	W	T	F	S	S
						1
2	3	4	5	6	7	8
9	10	11	12	13	14	15
16	17	18	19	20	21	22
23	24	25	26	27	28	29
30						

what goes in each bin?



Compost your food scraps, nurture your garden and cut your waste in half.

For home composting tips visit ballina.nsw.gov.au/community-programs

home compost

Fruit and vegetable scraps

Eggshells

Grass clippings

Coffee grounds

Leaves and flowers

Shredded paper

Australian certified compostable bags



Continue to use your bin with the dark green lid.

All new and replacement landfill waste bins will now have **red lids**.

landfill

Disposable nappies

Personal hygiene and medical waste (no sharps)

Pet droppings in a plastic bag

Rope, string and cable

Other items that cannot be recycled, reused or composted

Food stained cardboard eg: pizza, hot chip boxes



NO PLASTIC BAGS OR COFFEE CUPS!

Continue to use your blue base bin with **yellow lid** as usual. All new and replacement bin bases will now be dark green.

recycling

Glass bottles and jars

Plastic bottles and tubs

Paper including newspaper, envelopes and magazines

Clean cardboard including egg cartons

Steel cans

Aluminium cans, clean foil and trays

Aerosol cans (empty)

Milk and juice cartons

Tetrapaks

bins should:

- Be presented **before 5am** or on the night before collection day as collection times can vary.
- Be a **maximum of 1m from the edge of the road seal** with front to the road and 50cm apart.
- **Not be overfilled** – lids must close fully.
- **Not be obstructed** by any vehicles, signs, trees or other objects.
- Bins must be **removed from kerbside** on the same day of service.
- Bins **heavier than 60kg** may not be lifted.

Scrap metal and electrical products are accepted free of charge at the Resource Recovery Centre.

contact information

For waste, resource recovery or bin enquiries:

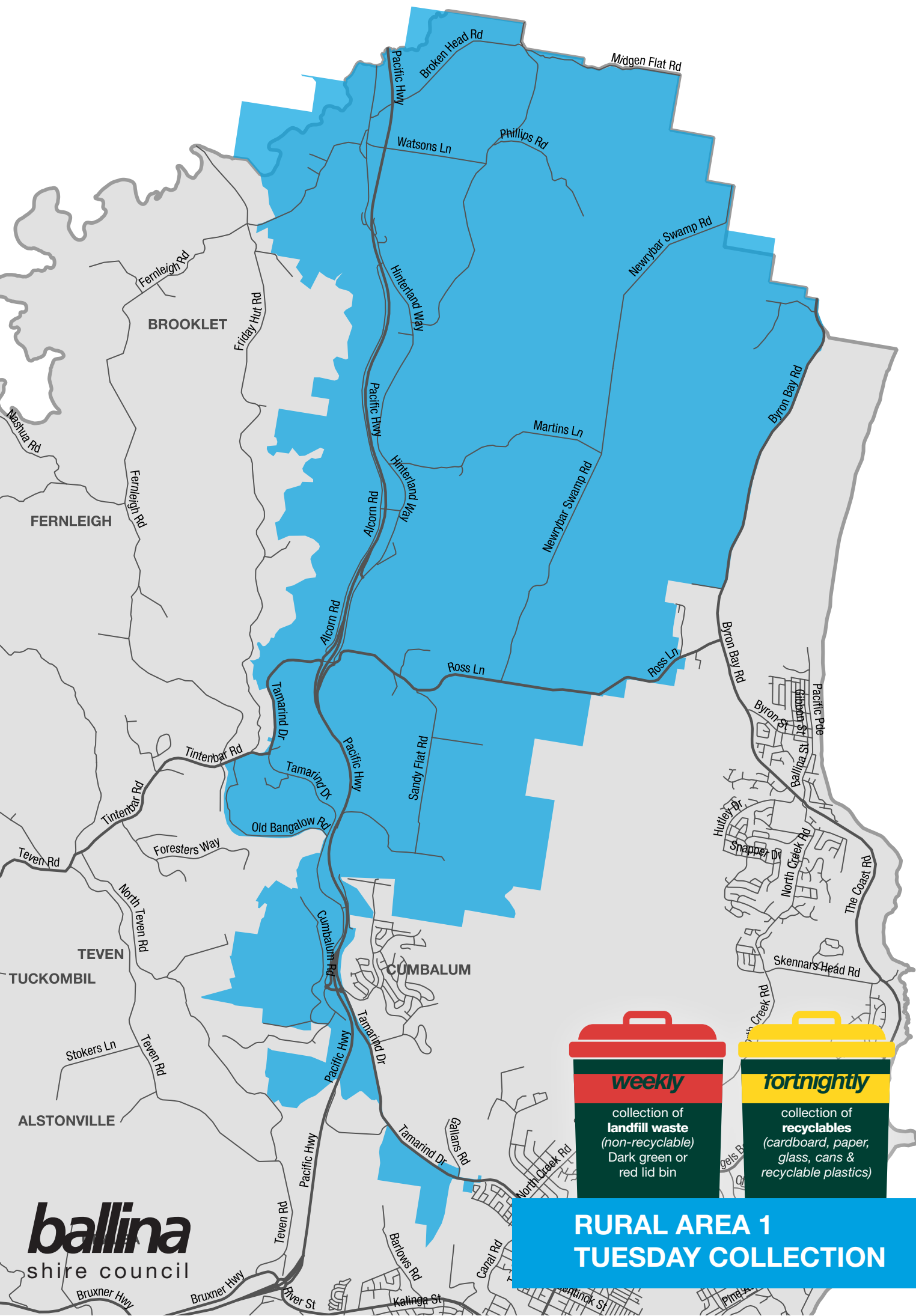
Resource Recovery Centre
167 Southern Cross Drive, Ballina
Phone 02 6686 1287

Salvage Shed tip shop:
Phone 0429 934 557

ballina.nsw.gov.au

let's get it
sorted
Working together to waste less & recycle more

ballina shire council



weekly

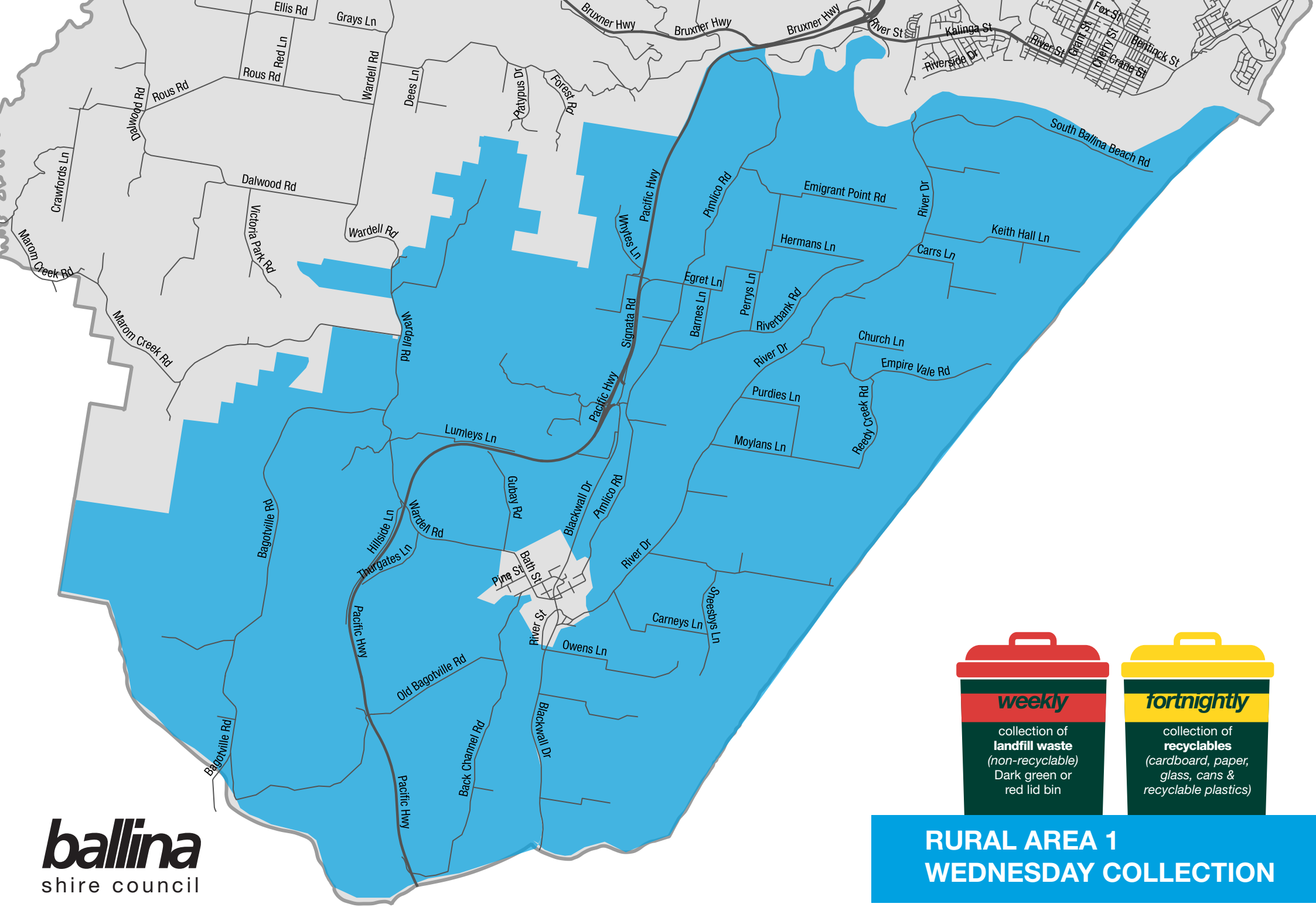
collection of
landfill waste
(non-recyclable)
Dark green or
red lid bin



fortnightly

collection of
recyclables
(cardboard, paper,
glass, cans &
recyclable plastics)

**RURAL AREA 1
TUESDAY COLLECTION**



weekly
collection of
landfill waste
(non-recyclable)
Dark green or
red lid bin



fortnightly
collection of
recyclables
(cardboard, paper,
glass, cans &
recyclable plastics)

**RURAL AREA 1
WEDNESDAY COLLECTION**